



WK703

## Men's eco-friendly multipocket trousers

- Multiple pockets for added storage and hanging loop for tools
- Twill fabric: lightweight and tear-resistant.
- Elasticated belt for extra comfort.

65% cotton/33% polyester/2% elastane. Made from 65% organic cotton, 33% pré-consumer recycled polyester and 2% elastane. Twill fabric. Washable at 60°C. Zip fastening and concealed metal button. Elastic waistband and belt loops for extra comfort. Crotch seam reinforced with triple topstitching. 2 slanted front pockets, one with coin pocket inside right pocket sack. 2 side gusseted pockets and 2 back pockets with flap and tear release fastening. Tool loop attached to the left rear pocket. Inner belt attachment loop. Reinforcement seam on pockets for added strength. Twin needle finish. Certified STANDARD 100 by OEKO-TEX® N° CQ1007/8, IFTH.



XS - S - M - L - XL - XXL - 3XL - 4XL - 5XL



255 g/m<sup>2</sup>



### More information

#### Logistic



PK - Pakistan

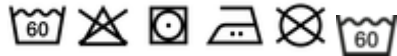
#### Country of origin

#### Customs code



62034235

#### Washing instructions



Black

Camel

Dark Grey

Navy

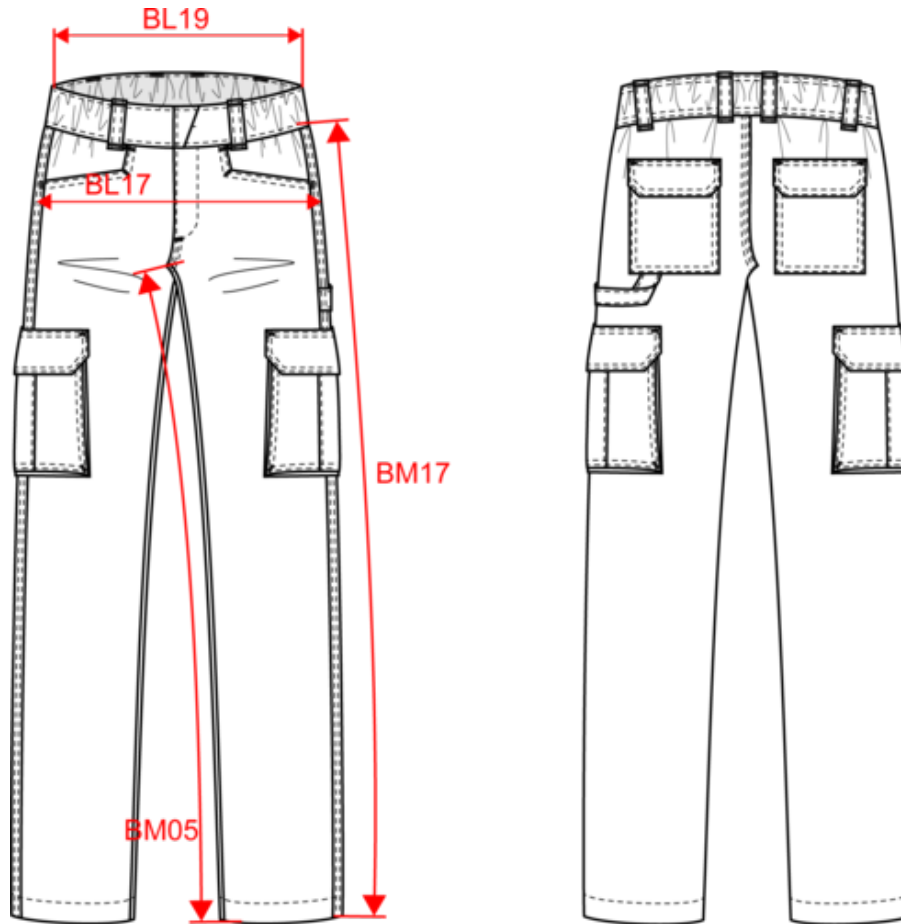
White



WK703

## Men's eco-friendly multipocket trousers

### Dimensions (cm)



Measurements in cm	XS	S	M	L	XL	XXL	3XL	4XL	5XL
H22 (M) - Side length	105.75	106.50	107.25	108.00	108.75	109.50	110.25	111.00	111.75
H23 (M) - Inside leg length	86.00	86.00	86.00	86.00	86.00	86.00	86.00	86.00	86.00
W03 (M) - 1/2 waist width	36.00	38.00	40.00	42.00	45.00	48.00	51.00	54.00	57.00
W11 (M) - 1/2 hip width	46.00	49.00	52.00	55.00	58.00	61.00	64.00	67.00	70.00
BL17 - 1/2 hip width (measured parallel to waistband)	46.00	49.00	52.00	55.00	58.00	61.00	64.00	67.00	70.00
BL19 - 1/2 semi-elasticated waist width (buttoned up and front band over back band)	36.00	38.00	40.00	42.00	45.00	48.00	51.00	54.00	57.00
BM05 - Inseam length	86.00	86.00	86.00	86.00	86.00	86.00	86.00	86.00	86.00
BM17 - Side length (waistband excluded)	105.75	106.50	107.25	108.00	108.75	109.50	110.25	111.00	111.75



WK703

## Men's eco-friendly multipocket trousers

### Colours information



**Black**  
RVB : 35,35,37  
Pantone C : Black  
Pantone TCX : 19-4004TCX



**Camel**  
RVB : 152,125,96  
Pantone C : 874C  
Pantone TCX : 17-1038TCX



**Dark Grey**  
RVB : 63,60,60  
Pantone C : 447C  
Pantone TCX : 19-0000TCX



**Navy**  
RVB : 41,46,56  
Pantone C : 433C  
Pantone TCX : 19-4012TCX



**White**  
RVB : 236,236,252  
Pantone C : White  
Pantone TCX : 11-0601TCX

Logistic



1



20

Sizes	Width (cm)	Height (cm)	Length (cm)	Net weight (kg)	Gross weight (kg)	Pieces/Box	Pieces/Bundle
XS	0.00	0.00	0.00	0.00000	0.00000	20	0
S	0.00	0.00	0.00	0.00000	0.00000	20	0
M	0.00	0.00	0.00	0.00000	0.00000	20	0
L	0.00	0.00	0.00	0.00000	0.00000	20	0
XL	0.00	0.00	0.00	0.00000	0.00000	20	0
XXL	0.00	0.00	0.00	0.00000	0.00000	20	0
3XL	0.00	0.00	0.00	0.00000	0.00000	20	0
4XL	0.00	0.00	0.00	0.00000	0.00000	20	0
5XL	0.00	0.00	0.00	0.00000	0.00000	20	0